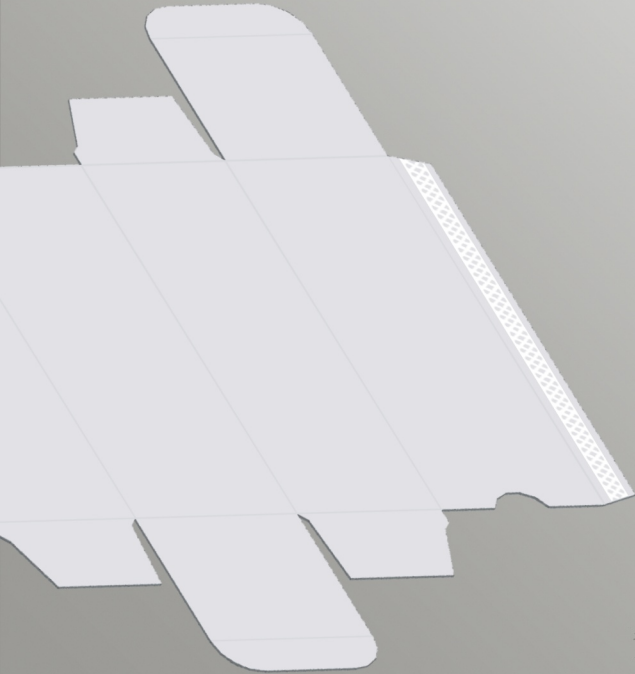


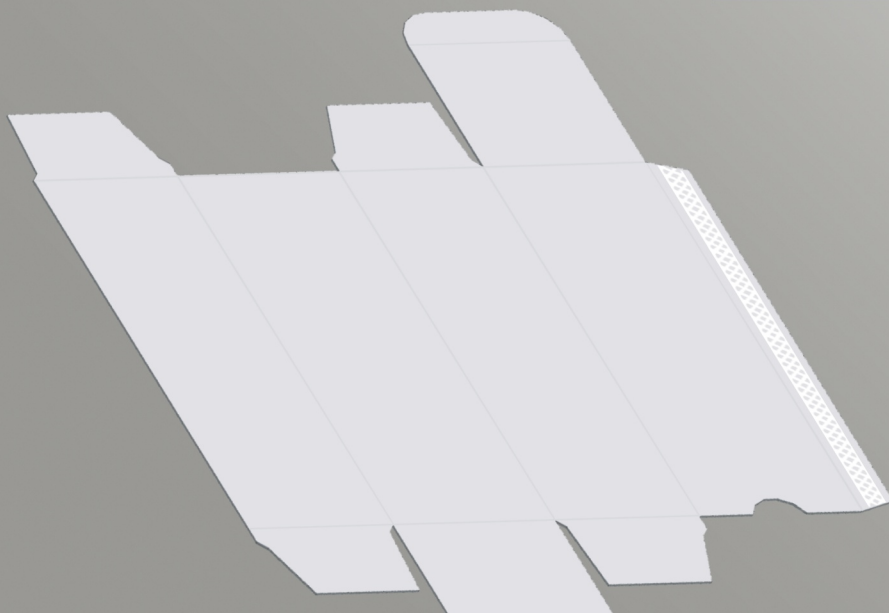


MODULE  
**GDC**  
Glue Disk Check

# KAS<sup>®</sup>



**GDC100**  
**Glue Disk Check**



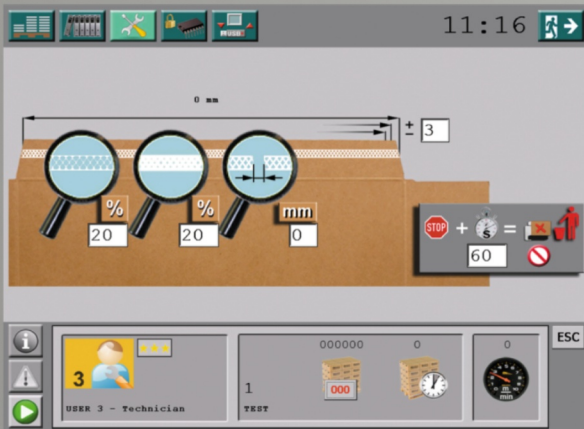
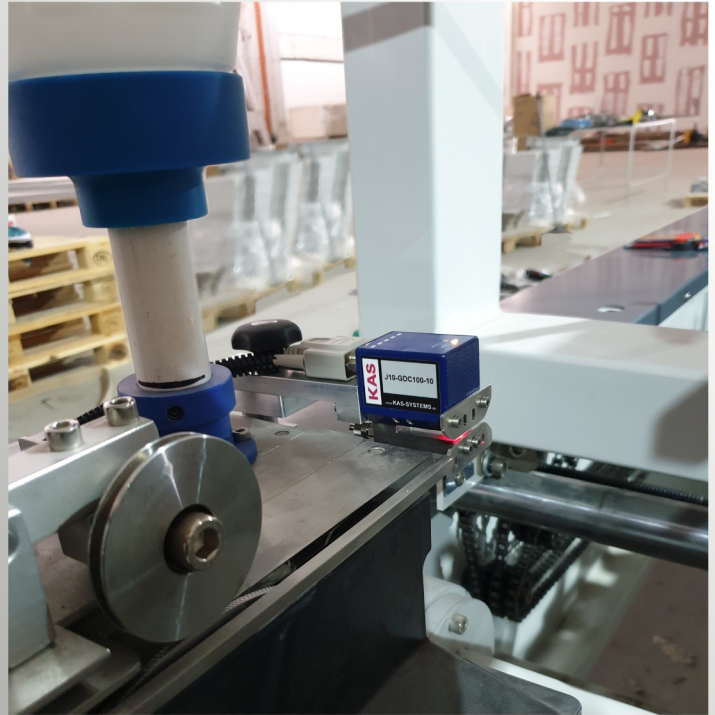
www.TOPGUARD.tech

## GDC Glue Disk Check

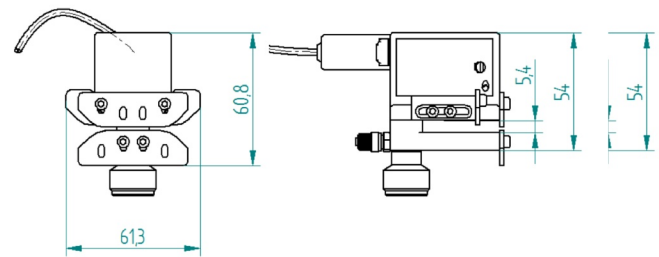
Sensor GDC100 for checking glue disk

# Glue Disk Check

Side seam gluing is the fundamental job in the straight line folding box production process, where disk gluing is the well-known standard. Straight line cartons run at highest machine speeds and Glue Disk Check becomes indispensable not only because of customer requirements, but also because applying too much or too little glue results in a huge waste production. With the KAS Glue Disk Check sensor GDC100 your disk gluing is under the strongest quality assurance, misglued cartons are detected immediately and waste production is a thing of the past.



Mechanical dimensions of GDC100



Technical changes and errors are subject to change

TECHNICAL DATA	measuring width	measuring slot	measuring principle	operating voltage	output signal	start signal output
DGC100	6 mm	~5 mm	microwave	24 VDC	0 .. 10 V	24 V low active

# KAS®

KAS GmbH

An der Lehmkuhle 8  
37359 KUELLSTEDT

Tel. +49 36075 589390

Tel. +49 36075 589391

Fax +49 36075 589392

email [info@KAS-SYSTEMS.de](mailto:info@KAS-SYSTEMS.de)

web [www.KAS-SYSTEMS.de](http://www.KAS-SYSTEMS.de)

## GDC Glue Disk Check

Sensor GDC100