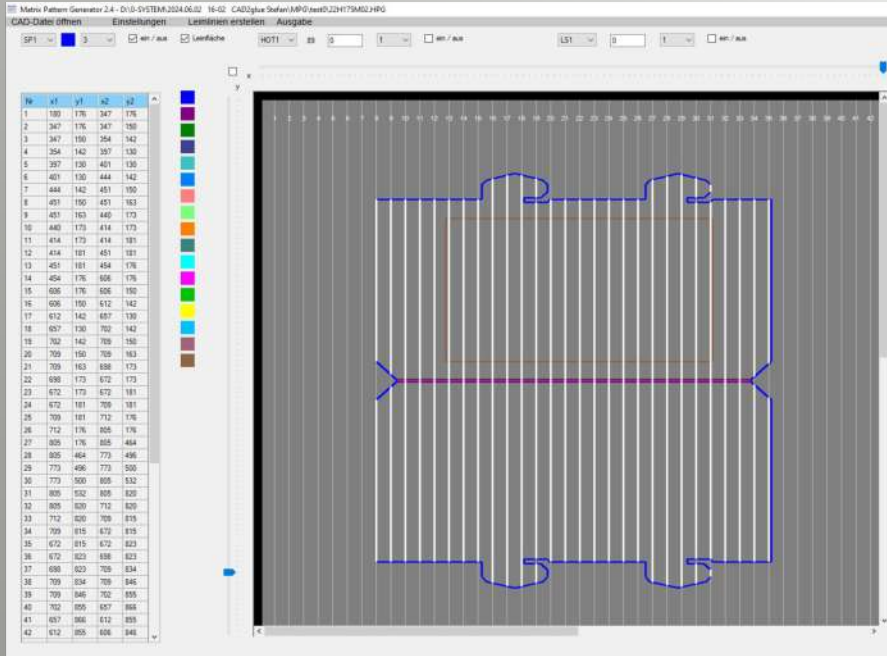




SYSTEM

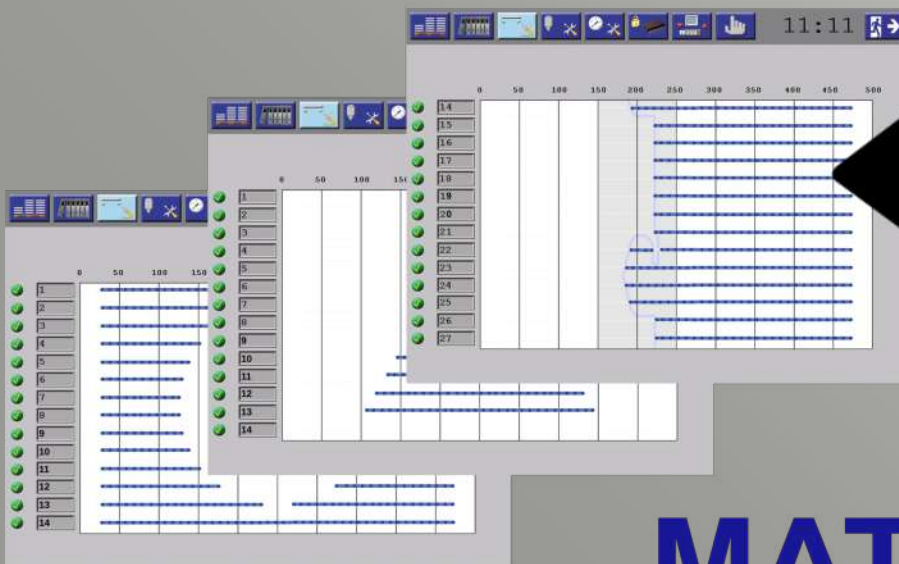
MATRIX

KAS<sup>®</sup>



CAD

to



MATRIX glue



MATRIX system

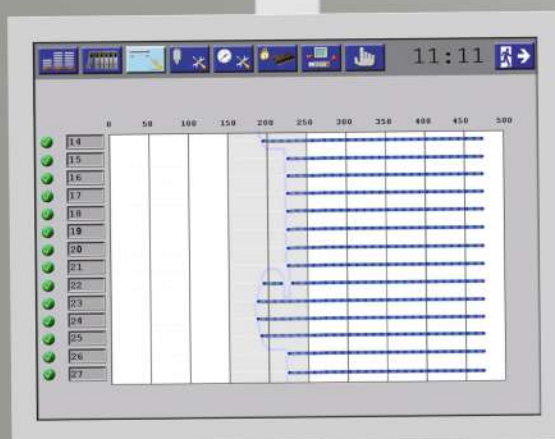
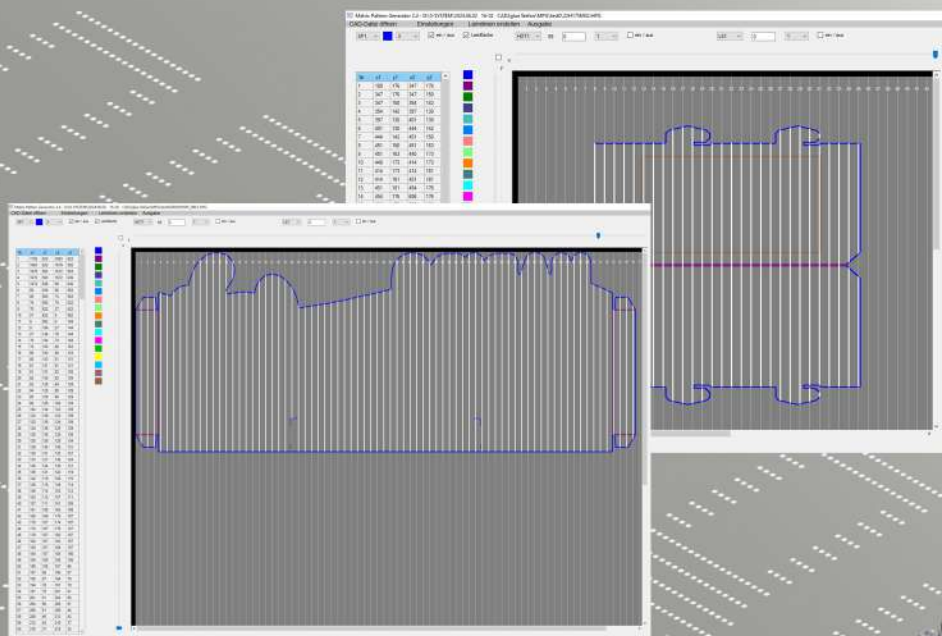
Universal CAD programmable gluing system

www.TOPGUARD.tech

# CAD 2 Matrix glue

If you have to apply complex glue pattern to larger areas using multiple glue guns, the conventional programming of each individual line is very laborious and time-consuming. In this case, you long for a simple programming way that enables automatic programming of gluing based on CAD data.


KAS reflected this need by developing the Windows based software "Matrix-Pattern-Generator" MPG. The MPG software inputs CAD data and outputs ready generated gluing patterns. Building this bridge between CAD and glue application is an essential prerequisite for achieving the Industry 4.0 standard.




# KAS®

KAS GmbH

An der Lehmkuhle 8  
37359 KUELLSTEDT

Tel. +49 36075 589390 

Tel. +49 36075 589391 

Fax +49 36075 589392

email [info@KAS-SYSTEMS.de](mailto:info@KAS-SYSTEMS.de)

web [www.KAS-SYSTEMS.de](http://www.KAS-SYSTEMS.de)

## CAD 2 MATRIX

Imports CAD data and outputs gluing patterns